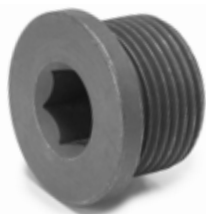
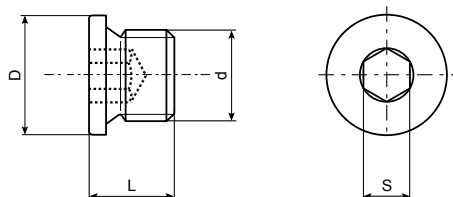


DIN 908


1 Tappi cilindrici con battuta con cava esagonale

Hexagon socket pipe plugs





Materiale	Acciaio a media resistenza
Classe	5.8
Finitura superficiale	Come da lavorazione
Codice	030504

Dimensioni in mm

d	M8x1	M10x1	M12x1,5	M14x1,5	M16x1,5	M18x1,5	M20x1,5	M22x1,5	M24x1,5	M26x1,5	M30x1,5
L	11	11	15	15	15	16	18	18	18	20	20
D	12	14	17	19	21	23	25	27	29	32	36
S	4	5	6	6	8	8	10	10	12	12	17
 PER 1000 PEZZI ~ kg	1,80	6,20	10,6	15,2	18,3	27,6	36,2	46,0	53,0	75,2	85,0
	200	200	200	200	100	100	100	100	50	50	25

Dimensioni in mm e frazioni di pollice

d	R 1/8"	R 1/4"	R 3/8"	R 1/2"	R 3/4"	R 1"	R 1- 1/4"	R 1- 1/2"
L	11	15	15	18	20	21	21	21
D	14	18	22	26	32	39	49	55
S	5	6	8	10	12	17	22	24
 PER 1000 PEZZI ~ kg	6,2	13,6	21,3	39,9	75,2	118	186	247
	200	200	100	100	50	50	10	10